

Dear Prospective Student

Thank you for considering Nayland College. We are an excellent school with many challenging opportunities on offer and a deserved reputation for caring about our students and their progress.

**Open Night Tuesday 9 August 7.00 pm - 9.00 pm:** This is a highly informative evening for prospective Year 9 students and their parents where we outline courses, extensions and school programmes. There will be guided tours around the school to meet teachers and students, and to see our College in operation.

**College Tours 10 to 19 August:** If you and your family are not able to come to Open Night, or if you would just like to view us on a normal school day, the College offers tours by the Dean or Senior Management. Please phone the College office (03 547 9769) to select a time to join a group.

**Enrolments Close on 29 August:** Enrolment forms should be returned to your school or directly to Nayland College. Dual enrolments are accepted, but early confirmation is to your advantage.

**Interviews 10 - 17 November:** These are an opportunity for you and your family to meet with the Dean and Senior Management to confirm subject choices, to discuss any particular matters relevant to your enrolment and to answer your questions.

**College Entrant Day 11 November:** All enrolled students will spend the day at Nayland College to enable pre-testing and orientation. You will also be logged on to our network for a Learning Styles Analysis. This is a great chance for you to have a look around and meet other new students.

So, we hope this enrolment process provides you with all the information you require and helps you make a smooth and satisfying transition to Nayland College.

At Nayland we are very proud of what our students achieve and look forward to you joining us in 2012. Remember - if you have any questions at all you can ring the College (03 547 9769) or email me at: [principal@nayland.school.nz](mailto:principal@nayland.school.nz)

Yours sincerely



Rex Smith  
PRINCIPAL  
June 2011

*'Nayland College shaping confident, adaptable contributors.'*



# Nayland College Enrolment Information Booklet

Nayland College warmly welcomes all prospective students and parents. We trust you will find this package useful in considering an enrolment at Nayland College in 2012.

If you require additional information or have any questions, please contact the College by phoning (03) 547 9769.

## Enrolment Scheme

*Families should be aware that Nayland College no longer has an enrolment scheme. We will be able to take all students who wish to enrol in 2012.*

## Senior Management

Rex Smith (Principal)

Richard Wilkins (Deputy Principal)

Trevor Olley (Deputy Principal)

Kathy Sherwood (Assistant Principal)



2011 Student Leaders

## Deans

Year 9 Dean Appointment pending

Year 10 Dean Chris Matthews Ext 880

Year 11 Dean Gavin Dickson Ext 826

Keran Brady Ext 826

Year 12 Deans Wendy Barker Ext 806

Brennan Geddes Ext 806

Year 13 Deans Alison Paton Ext 881

Tim Parker Ext 881

Email [chrisma@nayland.school.nz](mailto:chrisma@nayland.school.nz)

Email [gavind@nayland.school.nz](mailto:gavind@nayland.school.nz)

Email [keranb@nayland.school.nz](mailto:keranb@nayland.school.nz)

Email [wendyb@nayland.school.nz](mailto:wendyb@nayland.school.nz)

Email [brennang@nayland.school.nz](mailto:brennang@nayland.school.nz)

Email [alisonp@nayland.school.nz](mailto:alisonp@nayland.school.nz)

Email [timp@nayland.school.nz](mailto:timp@nayland.school.nz)

We look forward to your joining our College.

Rex Smith  
PRINCIPAL

College: ☎ (03) 547 9769

Email: [principal@nayland.school.nz](mailto:principal@nayland.school.nz)

2001 Goodman Fielder Secondary School of the Year  
2002 Goodman Fielder Secondary Schools Merit Award  
2003 Computerworld 'Excellence in the Use of IT in Education' Award

2001 Jade Excellence in Education Award  
2002 Multiserve Education Project Award  
2004 International Education Excellence - Pastoral Award

2007 Finalist Computerworld Excellence Awards 'The Use of IT in Education'



# Key Questions and Answers about Nayland College

*- because we believe in keeping parents as fully informed and involved as possible*

*These are questions the Education Review Office suggests parents ask when choosing a secondary school. Further information is available in the prospectus and from the College.*

***Q If I choose Nayland College will there be a place for my child?***

We can take all students as we are no longer required to maintain a zone. It is important that everyone who wants to come to Nayland returns an enrolment form by Monday 29 August.

***Q What are the advantages of coeducation?***

We firmly believe coeducation enhances the qualities of young people. As they interact they learn to respect the rights and opinions of everyone and they develop the social skills that help them grow into positive, confident and well-adjusted young adults.

***Q How do Nayland students perform academically?***

Nayland consistently achieves top scholarship results and sustains external NCEA pass rates well above the national average. Nayland students achieve notable success in a range of other qualifications, academic competitions and tertiary scholarships.

***Q How and when will you let me know how my child is getting on?***

You will receive three written reports including a progress report early in the year to tell you how your child is settling in to their new classes. Year 9 parents have a special meeting in the first term to get to know the form teachers and other parents. Form teachers and deans will contact you if there are matters causing concern. There are also parent interviews and subject teachers will phone home when there are issues or to inform you when things are going particularly well.

***Q How will I find out what is going on at College?***

You will receive a newsletter, mailed twice a term, and notices to advertise meetings or events at College. You can also access daily notices on our website. Whenever your child has a class trip or special activity we send you a letter with all the details. You will also receive a calendar that highlights major events for the College year and upcoming events are advertised on the radio.

***Q What access will I have to information about my child?***

We have an open information policy and you have the right to see all information we keep about your child. It is also helpful if the College is kept informed of changes at home. We want to hear from you and work with you. By being involved in your child's education and activities you give them the best chance for success. You will also have an electronic log on to enable you to check your child's attendance, timetable and academic record.

***Q How does Nayland ensure that students are safe and happy?***

Our supportive network of teachers, form teachers, deans and guidance counsellors meet regularly so individual problems are quickly identified and attended to. We take a personal interest in every student as your child's welfare is our number one concern. Your child's vertical form teacher will be a key person in your child's life throughout their time at Nayland.

***Q What should I do if I am worried about my child's progress or experiences at school?***

Let us know promptly by contacting the form teacher or dean. It is always better to deal with problems as soon as possible. Also, our experience and knowledge will be of help as you deal with the challenges of adolescence.

***Q What fees or donations does the College ask for?***

We keep our school donation and activity fees as reasonable as possible and hope you will pay promptly or make arrangements for time payment. In 2012 the single donation will be \$220 (\$30 discount for early payment by the end of May) and the family donation will be \$280 (\$30 discount for early payment by the end of May). Whenever any cost is involved for materials and services used by your child you will receive a letter giving details. All payments may be made at the Student Office where receipts are issued.

***Q What is the College's attitude to drugs, alcohol and smoking?***

Like you, we do all we can to educate your child about the dangers of alcohol, drugs and smoking and forbid them all during any school activity. Students with a smoking addiction will be helped to quit but can expect to face disciplinary action if they are caught smoking at school or when associated with the College. The College is a Smoke Free Zone.

***Q What sexual health and education programmes does the College have?***

Your child will receive a full programme of social and sexual health education throughout their years at Nayland. You are welcome to see what we teach and discuss the approach Health teachers and invited experts take.

***Q How does the College help students choose their subjects?***

Students receive professional careers information and guidance at all levels. We want your child to follow appropriate pathways that ensure they are well equipped for further education, their career and life beyond school.

***Q How do students get involved in sports teams, music groups and drama?***

Every day every class receives the School Notices with details about meetings, sports trials and auditions. Form teachers make sure your child knows about the opportunities open to them and our Sports Director and Performance Arts Coordinator will help them sign up for the activities they want to participate in.

***Q What are the arrangements if my child gets sick at school or has to stay at home because of illness?***

We contact you immediately if your child should return home. Otherwise they may spend a short time in the sick bay or receive first aid. If your child is sick you are encouraged to telephone the College (03) 547 9769 and select option 1 to leave absentee details, or email [away@nayland.school.nz](mailto:away@nayland.school.nz). When students have time off sick, and the absence has not been reported to the College, they must bring an absence note to the Student Office when they return.

***Q How does Nayland monitor attendance?***

Our computerised attendance system ensures that a check is kept throughout the day. You will receive a text message if your child misses a class without explanation. When the Attendance Officer or Form Teacher is concerned about an unexplained absence they may ring home. You can check your child's attendance on our student portal, accessible through our website.

***Q Will my child be placed in a class that best meets their learning needs?***

Yes. After testing on College Entrance Day, evaluations of current progress, consultation with 2011 teachers, and with parents where appropriate, students are grouped according to their needs. At your enrolment interview you will be able to discuss the learning needs of your child.

***Q If my child has special talents will these be catered for?***

When your child enrolls we will ask about their special abilities and discuss ways that these can be extended when they join us. All students are put into classes appropriate to their abilities and we encourage students to take on extra interests that will expand their talents. Nayland believes that each student is an individual and we work very hard to cater for your child's requirements.

***Q If my child has special learning needs, will these be catered for?***

Yes, those students needing support are grouped in smaller classes so they receive more individual attention. These groupings may be in single or selected subjects. Students with specific learning difficulties are provided with individual and small group tuition to enable them to participate fully in the classroom programme. Selected students will be eligible for the excellent programmes our Learner Support Centre offers.

***Q Can your child be in the same class as their friends?***

Yes, for some of their subjects. When you come to interviews later in the year we will make sure we know which friends your child would like to be with so they can start Nayland College in classes with people they feel comfortable with. This really helps, though it will not be long before your child makes new friendships.

***Q What time does the College day begin and end?***

We expect all students to be at College by 8.50 am and ready for form time at 8.55 am. The day finishes at 3.10 pm. You will receive details about interval and lunchtime arrangements at the beginning of the year.

***Q How does Nayland welcome new students to the College?***

Year 9s have an orientation programme on the first day of school to find their way around the College and learn what our expectations are. The deans and form teachers look after new students and make sure they do not get lost. It is no time at all before juniors are feeling right at home.

***Q What arrangements are there for students leaving the College grounds during the day?***

Your child must stay in the College unless they have your written permission and the permission of the College to leave the grounds. In Year 13 a special contract allows students to study at home or leave the school during the day.

***Q Do girls and boys get equal opportunities in all activities?***

Absolutely, and that healthy interaction is one of the great things about co-education. Your child will learn sound values and social skills from teachers and from our senior role models.

***Q How does Nayland support sporting and cultural activities?***

Nayland College has a Sports Director, Code Coordinators and a Cultural Activities Coordinator who all work very hard to organise teams and activities so that everyone can be fully involved. The College also provides uniforms, equipment and coaches - and boasts one of the highest participation rates in New Zealand for a coeducational school.

***Q Do senior students look after the juniors?***

This is a feature of Nayland. With vertical forms being introduced, seniors will work with juniors in their form classes and act as coaches, activity organisers and peer mediators. The seniors will support your child at the swimming and athletics sports, at camps, in activities such as Stage Challenge and generally around the College.

***Q May I see the school charter and read the last ERO report?***

Of course. A copy of the charter is kept in the reception area and also on the College's website: [www.nayland.school.nz](http://www.nayland.school.nz) You can read the ERO report on [www.ero.govt.nz](http://www.ero.govt.nz) or you may request a copy from the Student Office.

***Q What if I have other questions?***

Please telephone the College (03) 547 9769. The Principal is always happy to talk to parents and answer any questions.

***Great teachers, excellent opportunities and a reputation for caring about our students!***



# Junior Uniform Dress Code

## Years 9 and 10

<p><b><u>GIRLS</u></b></p> <p><b>Skirt</b></p> <p><b>White Blouse</b></p> <p><b>Socks/Stockings</b></p>	<p>A regulation Nayland skirt of maroon/grey/blue check fabric to be worn all year. Skirts are to be worn at a reasonable length</p> <p>A white peaked blouse may be worn all year. There is a long sleeved peaked blouse available for cooler months. Please note: this is the only style of blouse that is acceptable. (A white short sleeved T-shirt may be worn underneath.)</p> <p>Black or white socks or plain black pantyhose</p>
<p><b><u>BOYS</u></b></p> <p><b>Polo shirt</b></p> <p><b>Shorts</b></p> <p><b>Trousers</b></p> <p><b>Socks</b></p>	<p>Must be clean shaven.</p> <p>Regulation grey poloshirt (A white T-shirt may be worn underneath).</p> <p>Mid-grey serge.</p> <p>Specified long dark grey trousers.</p> <p>Grey with double maroon band.</p>
<p><b><u>BOTH GIRLS AND BOYS</u></b></p> <p><b>Jersey</b></p> <p><b>Sweatshirt/Jacket</b></p> <p><b>Footwear</b></p> <p><b>Scarf</b></p> <p><b>Swimming</b></p> <p><b>Physical Education</b></p> <p><b>Practical Classes</b></p> <p><b>Hair</b></p> <p><b>Sun Hats</b></p> <p><b>Jewellery</b></p> <p><b>Makeup</b></p>	<p>Maroon 'V' neck.</p> <p>Regulation black long sleeved sweatshirts and jackets with zip fronts and the school crest on the front are only available for purchase from the Student Office. <b>No</b> other sweatshirts or jackets may be worn with the uniform.</p> <p>Flat sandals, plain black or brown, traditional Roman or sports style with open toe and heel strap.</p> <p>Flat shoes, plain black. No fancy buckles, studs or stitching.</p> <p>In school colours or plain black.</p> <p>Suitable and appropriate wear.</p> <p>A suitable change of clothing.</p> <p>Shoes must be worn in workshops and laboratories.</p> <p>Must be clean, tidy and of natural colour.</p> <p>May be worn all year for sun protection. Plain hats (no beanies) worn correctly are acceptable. No hats to be worn inside.</p> <p>A pair of matching studs or sleepers. No obvious body piercing or jewellery.</p> <p>No excessive makeup is to be worn</p>
<p><b>Boys and Girls Uniforms are available from Postie Plus Nelson</b></p>	

**UNIFORM SHOULD BE WORN CORRECTLY AND WITH PRIDE**



# THE NAYLAND WAY

---

---

Nayland staff and students agree that showing **respect, tolerance** and **compassion**, acknowledging **rights and responsibilities** and treating everyone **fairly** should underpin everything we do.

As students, you earn your **rights** by meeting your **responsibilities**, so:

- **Be thoughtful, cooperative and tolerant.**  
This makes it easier for everyone to learn and work together.
  
- **Respect others' rights to feel safe at school and to learn without interruption.**  
This ensures that all students can enjoy learning in a supportive environment.
  
- **Be well mannered, considerate and friendly to each other, to staff and to visitors.**  
This maintains a positive atmosphere and the whole school gains respect from our community.
  
- **Be prepared for learning**  
This means bringing a positive attitude, the correct materials and a willingness to contribute.
  
- **Respect our school and keep it clean, safe and attractive.**  
This ensures a pleasant environment that we can all be proud of.
  
- **Dress correctly.**  
This reflects well on you and our school.

**Therefore, these types of behaviour will not be accepted at Nayland College because they prevent you and others making the most of Nayland's learning opportunities.**

- Rude or abusive language
- Bullying, including cyber bullying, violence or threatening behaviour
- Sexual or racial harassment
- Damaging or stealing property
- Possessing or using tobacco, alcohol or harmful drugs or substances
- Disruptive behaviour
- Defiance

*Nayland College is a friendly, helpful and caring school because we insist on certain rights and responsibilities for all. Meeting the expectations of this code will help keep it that way.*

**REMEMBER YOU OWN YOUR OWN BEHAVIOUR (YOYOB)  
AND ARE RESPONSIBLE FOR YOUR LEARNING PROGRESS.**

## YR 9 e-Learning Class - 2012

### WHAT IS IT @ NAYLAND?

A class of students who have chosen to have part of their Year 9 course (Maths, English, Science and Social Studies) delivered through digital technologies.

As part of their decision to belong to this class they will agree to purchase or lease their own device to enable them to connect to the College intranet and to the internet.

This is a trial class for 2012 with a view to expanding this option across more year levels for 2013 and beyond.

### WHAT DEVICES?

This will be up to students and their parents to decide. However, there will be minimum specifications that will be sent out to those students who return the 'expression of interest' form.

### WHAT IS e-LEARNING?

e-learning can cover a spectrum of activities from supporting learning to blended learning (the combination of traditional and e-learning practices), to learning that is delivered entirely on-line. However, whatever the technology, **learning is the vital element!**

e-learning is no longer simply associated with distant or remote learning, but forms part of a conscious choice of the best and most appropriate ways of promoting effective learning.

### WHY e-LEARNING?

e-learning has a number of elements that contribute to effective teaching and learning:

- ✓ it is authentic
- ✓ it is relevant
- ✓ it is immediate
- ✓ it is student focussed

**Nayland College** is now in a position, following a significant wiring up-grade and with the recent implementation of wireless technology, to be able to offer this option for students.

### IF I AM INTERESTED - WHAT DO I DO?

1. Complete the 'expression of interest' included with this prospectus.
2. Students who complete the 'expression of interest' will then be provided with the minimum specifications for the device that they will require along with some purchasing and leasing options.
3. A final selection process will then take place before the end of Term 3. A meeting of all selected students and their parents with the principal and teachers of the class will occur in Term 4.

## YR 9 e-Learning Class - 2012

### EXPRESSION OF INTEREST

NAME \_\_\_\_\_

ADDRESS \_\_\_\_\_  
\_\_\_\_\_

PHONE \_\_\_\_\_

CELLPHONE \_\_\_\_\_

EMAIL \_\_\_\_\_

I am interested in being in the Year 9 e-Learning class in 2012.

I understand that it will require me to purchase or to lease a device that will meet the school's specifications.

I understand that this expression of interest is not a final commitment to the e-Learning class.

- Please attach this expression of interest to your enrolment form.
- More information will be posted out to you once the school receives this form.

\_\_\_\_\_  
Student Name

\_\_\_\_\_  
Parent/Caregiver Name

\_\_\_\_\_  
Signed

\_\_\_\_\_  
Signed



## WHANAU CLASS 2012



In 2012 Nayland College will once again be offering a Whanau form class. This class will be open to students from Year 9 to Year 13.

The Whanau form class will operate from Te Whare Taurawhiri.

The students who are accepted in to this class will be those who are able to live by the kaupapa and who also wish to be involved in Māori activities in the school and the community. They will be learning te reo Māori and/or are a member of Te Whaioranga Kapa Haka group.

As a member of the Whanau your son/daughter will have the opportunity to be involved in activities and hui both in school and in the community. All trips and activities will operate under school rules which the students are expected to abide by. We will be working with all students to set goals to assist their development and progress and we will be working hard to encourage them to achieve their goals. It is also our intention to appoint student Māori leaders (Kaitaunaki) for 2012.

The kaupapa for the Whanau form class will be:

All students who are members of the Whanau form class are expected to:

- Be learning te reo Māori and/or be involved in the kapa haka group
- Attend school every day (unless there is genuine reason)
- Set learning goals and personal goals each term (there will be guidance and help available)
- Represent the Whanau with pride
- Follow the Nayland Way in their interactions with other people
- Attend Whanau hui

There will also be an expectation that parents of students in the whanau will attend the two hui that will take place each year. These hui will be to encourage feedback from parents and also to discuss with you what we are doing to help your child to be successful at Nayland College.

A Whanau hui and shared kai will take place as soon as we are up and running. A separate panui will come home about this.

We want to encourage parents to be an active part of our Whanau, so please feel free to come and spend time with us in Te Whare Taurawhiri. We are looking forward to working with you and your taiohi this year. If you wish to discuss anything about the Whanau please do not hesitate to contact us - no matter how minor your query might seem.

Rex Smith  
Principal



# The Arts at Nayland College



As well as classroom programmes in Art, Music, Drama and Performance Arts, Nayland offers an impressive range of related opportunities. These include:

- ✎ **Theatre Sports**, a new group working in conjunction with the Court Theatre in Christchurch
- ✎ **Speech Competitions**
- ✎ **Shakespeare Competitions** - past regional winners of Sheilah Winn Shakespeare Festival attended Nationals
- ✎ Our **Kapa Haka group** performing at nga powhiri, Manu Korero, cultural events and other competitions
- ✎ **Stage Challenge** (People's Choice Award in 2008; winners of Gold in 2009 and 2010 and second in 2011)
- ✎ **Debates**
- ✎ National and local **art competitions**
- ✎ **Exhibiting** at the Suter Gallery
- ✎ **Performing at school functions** and assemblies
- ✎ **Public performances** in the community
- ✎ **Nelson Arts Festival** schools' programme performances, workshops and red square.

The College also hosts numerous **touring drama and music groups** which are always popular.

## Music Opportunities

**Orchestra** - Playing selections from shows and carefully graded arrangements, this orchestra gives all our instrumentalists a chance to participate.

**Vocal Company** - Nayland's Vocal Company has earned an excellent reputation for its up-market and polished performances.

**Jazz Band** - Small group of jazz enthusiasts who wish to learn the art of jazz improvisation and who will aspire to enter the Southern Jam Jazz competition.

**Chamber Groups** - For those with special talents, this is a showcase and an opportunity to explore the classical repertoire.

**Saxophone and Clarinet Groups** - To cater for the number of keen woodwind players we have a group exploring jazz ensembles and a Clarinet Quintet.

**Concert Band** - Performs regularly and caters for our beginner and intermediate instrumentalists.

**Instrumental Tuition** - Nayland offers students a wide range of instruments they can learn at school at very little cost. Some instruments are available for hire.

**Private Tuition** - in vocal and drums available.

GUITAR CLARINET VOCAL FLUTE VIOLIN VIOLA OBOE  
CELLO DOUBLE BASS SAXOPHONE PIANO TRUMPET TROMBONE



**Stage Shows:** Nayland is renowned for its musical shows like last year's 'Chess'.

**Tours:** This year the vocal company and orchestra travelled to Wellington to perform to other schools and sample their culture. They also performed in the Civic Square.

**Rock Bands:** Facilities are available for bands. This year Nayland has a number of successful entries in the Smokefree Rock Quest.

**Class performances:** A large amount of music and performing arts is assessed on public performance which is a great chance for friends and family to come and see students progress and quality performances. This includes the dance Showcase3 and Y13 drama productions.



Nayland College has well equipped art and design suites, music suites and a Performance Arts Centre. Our Performance Arts Coordinator, Jane Pascoe, works very hard to support these activities.

So, there is plenty to get involved in at Nayland College - and we encourage everyone to have a go!

# Nayland College Sport

*A wealth of sporting opportunities*

Over the last 10 years Nayland College has become one of New Zealand's top co-ed sporting schools. In the past 7 years alone we have had a staggering 96 New Zealand representatives in a wide range of sports. We have been represented in smaller sports such as rock climbing, speed skating and orienteering through to football, basketball, volleyball and touch.

The Boys' Football team has produced 11 international players in the last 7 years and has consistently been one of the top teams in NZ during the last 8 years including being placed 2<sup>nd</sup> in NZ in 2010.

- The Year 9 Boys' Volleyball team were the No.1 team in the South Island in 2010 and the Senior Boys' team placed 11<sup>th</sup> in NZ. Three players were selected for the South Island team that won the Trans-Tasman series in Australia.

- The Junior Girls' 4 x 100 relay team placed 4<sup>th</sup> in NZ and the Junior Boys' 4 x 100 relay team won the South Island title.



- We have had 14 students in NZ basketball teams over the past 7 years. The Senior Boys' team are the current South Island champs and placed 4<sup>th</sup> in NZ and the Junior Boys placed 3<sup>rd</sup> in the South Island last year.
- The Boys' Badminton team has won the Tasman Schools' title 9 years running.
- In rugby last year Nayland teams made the finals in the U14 and U18 grades and the 1<sup>st</sup> XV are now part of the prestigious Press Cup.
- We have an annual winter sports exchange with Tawa College playing 11 sporting codes.



## *Overseas travel*

Nayland's sports teams have exciting opportunities to travel overseas.

- The Boys' and Girls' Volleyball teams have travelled to compete in the Australian School Champs and the senior girls are attending the Australia School Champs this year.
- The football team toured South America in 2007 and Australia in 2009 and are heading back to Australia this year. We are also in the early stages of a proposed tour to Brazil in 2014 with 2 teams.
- The Girls' and Boys' Basketball teams have travelled abroad over the past 5 years playing schools throughout Australia.

Enrolment at Nayland enables students to take advantage of a variety of wonderful sporting opportunities.

## *Encouraging Participation*

Nayland encourages full participation in sports. This year we have 12 basketball teams, 14 netball teams, 13 volleyball teams, 5 rugby teams, 4 football teams, 2 cricket teams, 4 badminton teams, 2 hockey teams, 2 softball teams, 3 orienteering teams and lawn bowls teams to name but a few. Many students are involved in other sports both inside and outside the College. Each year up to 750 students represent Nayland at National, South Island and regional tournaments.



## *Why Nayland College?*

We have over 185 coaches, managers and volunteers involved in our sports. Because of their generous support Nayland offers an impressive range of sporting opportunities. We encourage participation in sport and give full support. Brendan Crichton and Julie Dempster are our two experienced coordinators who are committed to all aspects of sport. We recognise that sport can play a big part in our students' lives and are here to help them reach their potential.

*Here's your chance. Come to Nayland and enjoy our exciting wealth of sporting opportunities!*



**Nayland College Sport Director**  
Brendan Crichton  
166 Nayland Rd, Stoke,  
Nelson, NEW ZEALAND  
Email: [brendanc@nayland.school.nz](mailto:brendanc@nayland.school.nz)  
Phone: +64 3 547 9769 ext 885  
Fax: +64 3 547 3498  
Mobile: 027 224 0679



### Term Dates

Term 1: Wednesday 1 February - Thursday 5 April  
 Term 2: Monday 23 April - Friday 29 June  
 Term 3: Monday 16 July - Friday 28 September  
 Half Term Break: 6 & 7 September  
 Term 4: Monday 15 October - 14 December

# Nayland College

## 2012



### Public Holidays

Nelson Anniversary Day - Monday 30 January (in holidays)  
 Waitangi Day - Monday 6 February  
 Easter - Friday 6 April - Tuesday 10 April (in holidays)  
 Anzac Day - Wednesday 25 April  
 Queen's Birthday - Monday 4 June  
 Labour Day - Monday 22 October

January						
M	T	W	T	F	S	S
						1
2	3	4	5	6	7	8
9	10	11	12	13	14	15
16	17	18	19	20	21	22
23	24	25	26	27	28	29
30	31					

February						
M	T	W	T	F	S	S
		1	2	3	4	5
6	7	8	9	10	11	12
13	14	15	16	17	18	19
20	21	22	23	24	25	26
27	28	29				

March						
M	T	W	T	F	S	S
			1	2	3	4
5	6	7	8	9	10	11
12	13	14	15	16	17	18
19	20	21	22	23	24	25
26	27	28	29	30	31	

April						
M	T	W	T	F	S	S
						1
2	3	4	5	6	7	8
9	10	11	12	13	14	15
16	17	18	19	20	21	22
23	24	25	26	27	28	29
30						

May						
M	T	W	T	F	S	S
	1	2	3	4	5	6
7	8	9	10	11	12	13
14	15	16	17	18	19	20
21	22	23	24	25	26	27
28	29	30	31			

June						
M	T	W	T	F	S	S
				1	2	3
4	5	6	7	8	9	10
11	12	13	14	15	16	17
18	19	20	21	22	23	24
25	26	27	28	29	30	

July						
M	T	W	T	F	S	S
						1
2	3	4	5	6	7	8
9	10	11	12	13	14	15
16	17	18	19	20	21	22
23	24	25	26	27	28	29
30	31					

August						
M	T	W	T	F	S	S
		1	2	3	4	5
6	7	8	9	10	11	12
13	14	15	16	17	18	19
20	21	22	23	24	25	26
27	28	29	30	31		

September						
M	T	W	T	F	S	S
					1	2
3	4	5	6	7	8	9
10	11	12	13	14	15	16
17	18	19	20	21	22	23
24	25	26	27	28	29	30

October						
M	T	W	T	F	S	S
1	2	3	4	5	6	7
8	9	10	11	12	13	14
15	16	17	18	19	20	21
22	23	24	25	26	27	28
29	30	31				

November						
M	T	W	T	F	S	S
			1	2	3	4
5	6	7	8	9	10	11
12	13	14	15	16	17	18
19	20	21	22	23	24	25
26	27	28	29	30		

December						
M	T	W	T	F	S	S
					1	2
3	4	5	6	7	8	9
10	11	12	13	14	15	16
17	18	19	20	21	22	23
24	25	26	27	28	29	30
31						





# 2012 SUBJECTS AND EXTENSION SELECTIONS

## YEAR 9

### Compulsory Core Subjects

- |                  |                 |
|------------------|-----------------|
| ▪ English        | ▪ Health and PE |
| ▪ Mathematics    | ▪ Art and Music |
| ▪ Social Studies | ▪ Technology    |
| ▪ Science        |                 |

All Year 9 students study these Seven Essential Learning Areas.

### Extensions

- |                      |                      |
|----------------------|----------------------|
| ▪ Art & Design       | ▪ Chinese            |
| ▪ Creative Food      | ▪ Drama              |
| ▪ Economics          | ▪ Fashion and Design |
| ▪ French             | ▪ Graphics           |
| ▪ Digital Technology | ▪ Japanese           |
| ▪ Outdoor Education  | ▪ Sports Education   |
| ▪ Te Reo Maori       | ▪ Workshop & Design  |

All Year 9 students will do **two** of these Extensions - one each half of the year.

### Choosing Extensions

- ✓ Questions to ask when deciding what two Extension subjects to choose:
  - What am I good at?
  - What sorts of things interest me most?
  - What new subject would I like to try?
  - What new skills will be important for me in the future?
- ✓ The Year 9 Deans are available to assist you, as are the Careers Advisor and Heads of Departments.
- ✓ Write your top **four** Extension choices on your enrolment form.
- ✓ We will discuss your choices at your interview in November.
- ✓ You will find out what Extensions you are in during your first week at school in 2012.

☺ Helpful website: Careers Website: [www.kiwicareers.govt.nz](http://www.kiwicareers.govt.nz)

☺ For enquiries: [xtend@nayland.school.nz](mailto:xtend@nayland.school.nz)

# Compulsory Core Subjects

<b>ENGLISH</b>	Leisa McCauley
<p><b>What you will learn:</b> English is about understanding and communicating meaning in a range of written, visual and oral texts. Critical and analytical thinking skills will be developed.</p>	
<p><b>Please note:</b> Classes are organised by ability in reading and writing. English is compulsory from Year 9 to Year 12.</p>	

<b>MATHEMATICS</b>	John Walker
<p><b>What you will learn:</b> Mathematics and statistics are about exploration and use of patterns and relationships in quantities, space, time and data. Skills in measuring, calculating and working with shapes and patterns will help students make sense of the world in which they live.</p>	
<p><b>Please note:</b> Mathematics is compulsory to Year 11. A scientific calculator is essential. Classes are organised on mathematical ability.</p>	

<b>SOCIAL STUDIES</b>	Mary Greenland
<p><b>What you will learn:</b> Social Studies is the study of people. A variety of concepts are explored in topics such as Governments, cultural interaction, economic decisions and migration. Students will learn new skills to interpret resources and use inquiry methods to research social issues.</p>	
<p><b>Please note:</b> Social Studies can be taken in the senior school. Related subjects are geography, history, tourism, economics, psychology and classical studies.</p>	

<b>SCIENCE</b>	Treena Blythe
<p><b>What you will learn:</b> Science is about making sense of the world in which we live. Studying science enables you to understand medical and health issues, new technology, electricity, household chemicals, transport, plants, the environment and other things affecting our daily lives.</p>	
<p><b>Please note:</b> Science is compulsory until year 11 when students are able to specialise in Biology, Chemistry, Physics, Earth and Space Science, Conservation and Marine Science. Entry into these subjects is usually dependant on performance in Level 1 Science.</p>	

<b>ART AND MUSIC</b>	Mike Friend and Chris Lukies
<p><b>What you will learn:</b></p> <p><b>Art:</b> Make use of line, tone, colour and texture and gain the drawing skills needed to plan and create artwork. You will look at and observe the works of other artists/designers as a means of making art.</p> <p><b>Music:</b> Musical styles and instruments, basic music notation, rhythm, pitch, musical performance, basics of musical theatre and working on keyboards.</p>	
<p><b>Please note:</b></p> <p><b>Art</b> prepares students for the specialist subjects of painting, design, printmaking, photography and art history in the senior school. A \$10 fee covers consumable items.</p> <p><b>Music</b> provides a sound basis for music and performance in the senior school. Instrumental tuition programmes are also available.</p>	

<b>HEALTH &amp; PHYSICAL EDUCATION</b>	Brennan Geddes and Athol Webster
<p><b>What you will learn:</b></p> <p><b>Health:</b> How to make good lifestyle choices in relationships, food and nutrition, drug awareness, sexuality and mental health. You will develop skills in assertiveness and conflict resolution.</p> <p><b>PE:</b> Movement skills in a range of activities such as aquatics, athletics, Te Reo Kori, small and large ball skills, gymnastics, dance, fitness studies and minor games.</p>	
<p><b>Please note:</b></p> <p><b>Health</b> can be taken in the senior school from Year 11 to Year 13. Aspects of health are reinforced at all levels of the College.</p> <p><b>PE</b> is compulsory to Year 11 and is available to Year 13. Courses can lead to sports, recreation or physical activity related careers, or can be taken for recreational purposes. All Years 9 and 10 students will take part in physical activities.</p>	

<b>TECHNOLOGY</b>	Damian Roughan
<p><b>What you will learn:</b> The process of investigating real problems or opportunities and developing and making creative solutions in a range of contexts, eg hard and soft materials, food, information and communication.</p>	
<p><b>Please note:</b> Technology in Year 9 leads to senior technology programmes. There are costs involved in the practical elements of some of these areas. \$25 material fee for the year.</p> <p>Note: Printing and Internet costs will be charged for Information and Communication Technology.</p>	

# Extensions

<b>ART &amp; DESIGN</b>	Diana Maskill
<p><b>What you will learn:</b> To create your own character illustrations using pencil drawing and the computer programmes Adobe Photoshop and Illustrator. We will draw a figure in different poses, facial expressions, manga and contemporary illustration styles.</p>	
<p><b>Please note:</b> This course is only for students with special aptitude. It will lead to Year 10 Art and beyond. Course fee: \$20. NB: All Year 9 students take a half year core art course.</p>	

<b>CREATIVE FOOD</b>	Cushla McKay
<p><b>What you will learn:</b> To produce successful and original food products in a safe and hygienic manner. This course uses student-centred activities, individual and group challenges.</p>	
<p><b>Please note:</b> For students who want to develop practical food skills and who have an interest in food. Course fee of \$25 is required.</p>	

<b>DRAMA</b>	Monica Manning
<p><b>What you will learn:</b> This course covers drama skills, movement, improvisation, stagecraft and voice production.</p>	
<p><b>Please note:</b> This course leads to Year 10-13 Drama and Performance Arts. It will assist you in participation of extra-curricular activities including Stage Challenge, Shakespeare competitions and the bi-annual production.</p>	

<b>ECONOMICS</b>	Nigel Lineham
<p><b>What you will learn:</b> We don't have enough money to get all we want. How to make our money go as far as possible, wise buying, consumer rights &amp; how to enforce them, credit cards, budgeting.</p>	
<p><b>Please note:</b> This course has direct relevance to daily living. It can lead to study in economics, business studies or accounting at Year 10 or beyond.</p>	

<b>FASHION AND DESIGN</b>	Annie McCreary
<p><b>What you will learn:</b> Fashion drawing skills, electronic and computer sewing machine operation, pattern and fabric knowledge and construction techniques. These will enable you to make high quality trendy clothes.</p>	
<p><b>Please note:</b> For students who want to develop practical skills and who have interest in fashion. Course fee of \$10 is required.</p>	

<b>GRAPHICS</b>	Damian Roughan
<p><b>What you will learn:</b> Sketching, drawing and modelling, design skills, how to use computer aided drawing programmes, how to effectively communicate graphically.</p>	
<p><b>Please note:</b> This course will form a sound base for graphics courses in Year 10 and beyond. Course fee is \$18 to cover the cost of modelling materials and student workbook.</p>	

<b>DIGITAL TECHNOLOGY</b>	Glenys Perry
<p><b>What you will learn:</b> To become digitally literate consumers and producers of technology by creatively and critically using digital technologies. You will develop quality digital media content such as movies, animations, multimedia presentations and computer games using software such as Macromedia, Photoshop, Flash and Scratch.</p>	
<p><b>Please note:</b> This course leads to Year 10 Digital Technology. There is a small charge to cover printing costs.</p>	

<b>LANGUAGES</b>	Jock McCreary
<p><b>What you will learn:</b> To understand, speak, write and read the target language related to everyday situations and about life. Student exchanges and school trips are possible. Languages offered in Year 9 are French, Japanese and Chinese.</p>	
<p><b>Please note:</b> <i>To study a language at a higher level you must start in Year 9.</i> Can lead to careers in trade, tourism, diplomacy, teaching, the arts, finance, government departments, the media and special interests. French costs: Language Perfect \$30-40.</p>	

<b>OUTDOOR EDUCATION</b>	Andrew Marshall
<p><b>What you will learn:</b> Group-based outdoor activities that include adventure-based learning challenges and introductory skills in activities such as kayaking, orienteering, mountain biking and bushcraft.</p>	
<p><b>Please note:</b> <b>Limited to 15 students in this course.</b> Students must provide their own mountain bike. Cost \$40 for activities where transport or specialist equipment is required.</p>	

<b>SPORTS EDUCATION</b>	Athol Webster
<p><b>What you will learn:</b> To improve skills and fitness levels and to develop sportsmanship by experiencing the roles of coach, captain, selector and referee through a range of sports competitions. Theory on sports nutrition, injury prevention and treatment, and goal setting is covered.</p>	
<p><b>Please note:</b> <b>This is a restricted entry course.</b> You must complete the separate application form on the Sports Education leaflet and attach it to your enrolment form. The course continues into Year 10 and develops in the senior school.</p>	

<b>TE REO MAORI</b>	Jane du Feu
<p><b>What you will learn:</b> An introduction to Te Reo (Maori language), customs and traditions including basic grammar development for written and oral work. To communicate and develop an understanding of all aspects of the Maori language. To participate in Tikanga Maori.</p>	
<p><b>Please note:</b> This course leads to Te Reo Maori in Year 10. It promotes bicultural development and is useful for a career in tourism, health work, social work, teaching and nursing. Costs: Possible Marae Visit, Language Perfect \$15.</p>	

<b>WORKSHOP AND DESIGN</b>	Damian Roughan
<p><b>What you will learn:</b> To design, make and evaluate individual solutions. You will work in a variety of materials using a range of machines and equipment.</p>	
<p><b>Please note:</b> This course will lead to Year 10 Technology. Course fee of \$25 is required for material costs.</p>	



## SUBJECTS THROUGH NAYLAND COLLEGE 2012

ESSENTIAL LEARNING AREAS	YEAR 9	YEAR 10	LEVEL 1	LEVEL 2	LEVEL 3
English and Languages	<b>English</b> ESOL	<b>English</b> ESOL	<b>English</b> ESOL	<b>English</b> ESOL	English ESOL
	<ul style="list-style-type: none"> <li>Te Reo Maori</li> <li>French</li> <li>Japanese</li> <li>Chinese</li> </ul>	<ul style="list-style-type: none"> <li>Te Reo Maori</li> <li>French</li> <li>Japanese</li> </ul>	Te Reo Maori  French Japanese Spanish	Journalism Media Studies Te Reo Maori Te Kakano French Japanese Spanish	Journalism Media Studies Te Reo Maori  French Japanese Spanish
Mathematics	<b>Mathematics</b>	<b>Mathematics</b>	<b>Mathematics</b>	<b>Mathematics</b>	Mathematics Calculus Statistics
Science	<b>Science</b>	<b>Science</b>	<b>Science</b>	Earth & Space Science Physics Biology Chemistry Conservation Horticulture Marine Science	Science Physics Biology Chemistry  Horticulture
Social Science	<b>Social Studies</b>	<b>Social Studies</b>	<b>Social Studies</b>	<b>Social Studies</b> New Zealand Studies	<b>Social Studies</b>
	<ul style="list-style-type: none"> <li>Economics</li> </ul>	<ul style="list-style-type: none"> <li>Economics</li> <li>Accounting</li> </ul>	Geography History  Economics & Business  Accounting	Geography History Classical Studies Tourism Psychology Child Studies Economics Business Studies Accounting Legal Studies	Geography History Classical Studies Tourism Psychology  Economic Business Studies Accounting
Technology	<b>Technology</b>	<b>Technology</b>	<b>Technology</b>	<b>Hospitality</b>	<b>Hospitality</b>
	<ul style="list-style-type: none"> <li>Creative Food</li> <li>Fashion &amp; Design</li> <li>Graphics</li> <li>Workshop &amp; Design</li> <li>Digital Technology</li> </ul>	<ul style="list-style-type: none"> <li>Technology: Food</li> <li>Technology: Textiles</li> <li>Graphics</li> <li>Technology: Hard Materials</li> <li>Electronics &amp; Control</li> <li>Digital Technology</li> </ul>	Hospitality Technology: Food Technology: Textiles Fashion & Design  Graphics Technology: Metal & Wood  Workshop Engineering B-Constructive Electronics & Control  Digital Technology Digital Applications Digital Media	Hospitality  Technology: Textiles Fashion & Design  Graphics Technology: Hard Materials Workshop Joinery & Cabinet Making Workshop Engineering Automotive Trades Electrotechnology  Digital Technology Digital Applications Digital Media CISCO	Technology: Textiles Fashion & Design  Graphics Technology: Hard Materials  Digital Technology Computer Science Digital Media CISCO
The Arts	<b>Art</b>	<b>Art</b>	<b>Art</b>	<b>Painting</b>	<b>Painting</b>
	<ul style="list-style-type: none"> <li>Art and Design</li> </ul>	<ul style="list-style-type: none"> <li>Music</li> <li>Performance Arts</li> <li>Drama</li> </ul>	Music (Performance) Performance Arts Drama	Design Art  Photography Art History Music (Performance) Performance Arts Drama	Design Art Printmaking Photography Art History Music (Performance) Performance Arts Drama
Physical Education and Health	<b>Physical Education</b>	<b>Physical Education</b>	<b>Physical Education</b>	<b>Physical Education</b>	<b>Physical Education</b>
	<ul style="list-style-type: none"> <li>Sports Education</li> <li>Outdoor Education</li> </ul>	<ul style="list-style-type: none"> <li>Sports Education</li> <li>Outdoor Education</li> </ul>	Physical Education  Outdoor Education Health	Football Academy Basketball Academy Rugby Academy Sports Academy Sports Education Outdoor Education Health	Football Academy Basketball Academy Rugby Academy Sports Academy Sports Education Outdoor Education Health
			<b>Career Education</b>	<b>Career Education</b>	
			Lifeskills Body Fusion	Customer Service Lifeskills Gateway Independent Living Employment Prep	

Core subjects in bold

• Junior Extensions



# NAYLAND COLLEGE

## Application for Enrolment

166 Nayland Road  
Stoke, Nelson 7011  
Phone: (03) 547 9769  
Facsimile: (03) 547 3498  
Email: [xtend@nayland.school.nz](mailto:xtend@nayland.school.nz)  
Website: [www.nayland.school.nz](http://www.nayland.school.nz)

<b>Form Class (if known):</b> <i>(Dean to complete)</i>		<b>Enrolment Category:</b> <i>(Dean to complete)</i>	
--	--	---	--

### Student Details

<b>Student's Surname:</b> <i>Eg Smith</i>		<b>Other Surname or previous family name:</b>	
<b>Student's First Name(s):</b> <i>Eg Christopher John</i>			
<b>Student's Preferred Name:</b> <i>Eg Chris</i>			
<b>Date of Birth:</b>	____ / ____ / ____ <i>Day Month Year</i>	<b>Gender:</b>	<input type="checkbox"/> Female <input type="checkbox"/> Male

**Student will be starting at Nayland College in Year Level:** *(please circle one)*      9      10      11      12      13

**Date student is expected to start at Nayland College:** \_\_\_\_\_ **Student's Home Ph:** \_\_\_\_\_

**Mail to Whom: (for official letters and invoices)**  
*Eg Mr W and Mrs C Friend*

**Student's Cell Ph:** \_\_\_\_\_

<b>Address:</b> <i>(Include Emergency Services or Rapid number for Rural Addresses)</i>	<b>Physical Address</b>		<b>Postal Address</b>	
	Num / Street:	_____	_____	_____
	Rural Delivery:	_____	_____	_____
	Suburb:	_____	_____	_____
	Town:	_____	_____	_____
Postcode:	_____	_____	_____	_____

**An Ethnic Group is required by the Ministry of Education for statistical purposes. Please tick one or more.**

NZ European / Pakeha

Maori      Iwi    1. \_\_\_\_\_      2. \_\_\_\_\_      3. \_\_\_\_\_

Do not know (If you do not know the name of your Iwi, please tick or please refer to the 'Iwi Affiliation Reference Sheet' at the College Office)

Pacific Island (please specify): \_\_\_\_\_       Other: (please specify): \_\_\_\_\_

Country of Birth: \_\_\_\_\_

**Previous school before coming to Nayland College:** \_\_\_\_\_

**NSI Number (if known):** \_\_\_\_\_

### Confirmation of Residency

**1. Have you previously attended a New Zealand school?**  
The Ministry of Education requires you to confirm whether or not the student named on this application for enrolment has previously attended a New Zealand school (please tick whichever applies):

Yes I have previously attended a New Zealand school       No I have not previously attended a New Zealand school

**2. Are you a New Zealand Citizen?**

Yes I am a New Zealand citizen       No I am not a New Zealand citizen.

If your answer to this question is 'Yes' and this is your **first enrolment** in a New Zealand school the Ministry of Education requires that you supply the college with evidence of citizenship. You may either bring an original document to the college when delivering this form or when attending your interview and a photocopy will be made.

**Designated College staff member to complete:** Photocopy of following document made for the college's records. \_\_\_\_\_ Staff code

<input type="checkbox"/> NZ Birth Certificate (inc Cook Island, Niuean, Tokelauan)	<input type="checkbox"/> NZ Citizenship Certificate
<input type="checkbox"/> NZ Passport (inc Cook Island, Niuean, Tokelauan)	<input type="checkbox"/> Cook Island, Niuean, Tokelauan Letter of Confirmation
<input type="checkbox"/> Cook Island, Niuean, Tokelauan Certificate of Naturalisation	<input type="checkbox"/> Cook Island, Niuean, Tokelauan Certificate of Registration

- If your answer to this question is 'Yes' and this is **not your first enrolment** please move on to page 2.
- If your answer to this question is 'No' please move to the next question regarding students who are **non New Zealand citizens**.

**3. Are you a non New Zealand Citizen?** If your child was not born in New Zealand the Ministry of Education requires you to supply the college with evidence of their citizenship and eligibility to enrol in a New Zealand school (where applicable). You may either bring your student's original passport to the college when delivering this form or when attending your interview and a photocopy will be made.

**Designated College staff member to complete:** Photocopy of following document made for the college's records. \_\_\_\_\_ Staff code

<input type="checkbox"/> Passport of (country, eg Australia): _____	<input type="checkbox"/> Residence Permit
<input type="checkbox"/> Student Visa/Permit ('MOE gazetted domestic student')	<input type="checkbox"/> Limited Purposes Permit & letter (secondary study)
<input type="checkbox"/> Other, please state: _____	First Language (spoken at home): _____

Primary Caregivers (Main Residence)	
<b>Female</b>	<b>Male</b>
Name: Mrs/Ms/Miss	Name: Mr
Relationship:	Relationship
Phone Home:	Phone Home:
Phone Cell:	Phone Cell:
Email:	Email:
<b>Address</b>	
Num / Street	
Rural Delivery:	
Suburb	
Town:	
Postcode:	
Workplace:	Phone:
Contact in an emergency: <input type="checkbox"/> Yes <input type="checkbox"/> No	Contact in an emergency: <input type="checkbox"/> Yes <input type="checkbox"/> No
Contact via text if absent: <input type="checkbox"/> Yes <input type="checkbox"/> No	Contact via text if absent: <input type="checkbox"/> Yes <input type="checkbox"/> No

Secondary Caregivers (Secondary Residence)	
<b>Female</b>	<b>Male</b>
Name: Mrs/Ms/Miss	Name: Mr
Relationship:	Relationship:
Phone Home:	Phone Home:
Phone Cell:	Phone Cell:
Email:	Email:
<b>Address</b>	
Num / Street	
Rural Delivery:	
Suburb	
Town:	
Postcode:	
Phone Work:	
Contact in an emergency: <input type="checkbox"/> Yes <input type="checkbox"/> No	Contact in an emergency: <input type="checkbox"/> Yes <input type="checkbox"/> No
Contact via text if absent: <input type="checkbox"/> Yes <input type="checkbox"/> No	Contact via text if absent: <input type="checkbox"/> Yes <input type="checkbox"/> No

Alternative Emergency Contact	
Name:	Relationship:
Phone Home:	Phone Cell:

Siblings at Nayland College		
If the student being enrolled will have siblings at Nayland College in the year that he or she attends, please list their names below. Siblings include brothers, sisters, stepbrothers, stepsisters and any children of 'blended' families.		
1.	2.	3.

If there are older siblings at College (living at the same address) we will assume that the details on this form are correct for all siblings. If this is NOT the case, please contact the College office with the correct details.

## Medical Details

Doctor: \_\_\_\_\_

### Medical Treatment

Parents/Caregivers enrolling a student at Nayland College give permission for the administration of first aid by staff with first aid training. Nayland College will give non-prescribed medication (according to the dosages specified) in emergency situations only. A register is kept of the medication and treatment given. Students who require non-prescription medication on a semi-regular basis are encouraged to provide their own supply which will be held in the Student Office for their use only.

### Medication

Do you require the College to hold and/or administer medication for your student?  Yes  No

If 'Yes' the College will make contact to confirm details and complete the necessary consent form/s

## Medical Conditions

Please list any medical issues of which the school should be aware.

Condition, eg Asthma	Treatment, eg Carries own inhaler (self controlling)

If there are any special circumstances or information that we need to know, please record it in this box. This could include access arrangements by another parent, learning difficulties, family circumstances. If you think it is relevant, let us know.

**Nayland College requires that the following undertakings be agreed to by the parent/s or legal guardian on behalf of themselves and the enrolling student.**

- I confirm that the information provided on this form is correct and complete.
- I will advise the College of any subsequent change to this information.
- I confirm that the residency information recorded on the previous page is true and correct (*Documents are attached if applicable*)
- I am aware that there are costs associated with a number of College activities. I undertake to pay these costs before the activity takes place, unless I have made other arrangements with the College.
- I consent to the student named on this form taking part in education outside the classroom on-site (within the school grounds) and off-site occurring during school time or finishing before 6.00 pm.
- For the purposes of the Privacy Act 1993, I hereby acknowledge and understand that:-
  - This information has been provided voluntarily and I/we had a choice as to whether to complete all parts of the form or not.
  - The Board of Trustees of Nayland College is collecting this information for the purposes of providing a database relating to the future education, guidance, monitoring and reporting of the student's progress and pastoral care.
  - The information collected may be aggregated for a variety of statistical and research purposes, but ensuring that no individuals can be identified.
  - The student's work and/or photograph/video images may appear in school publications/website and. unless advised otherwise, it is understood that the school has consent to the publication of work and/or photographs/video images of the student that may appear in such school publications including newsletter, prospectus, magazine, website and advertising material.
  - The school may disclose names, addresses and telephone numbers to the Parent Teacher and Past Pupils' Associations.
- I hereby undertake with the College Board of Trustees to observe the conditions and expectations of Nayland College.

Name of Parent/Legal Guardian: \_\_\_\_\_

Signature of Parent/Legal Guardian: \_\_\_\_\_ Date: \_\_\_\_/\_\_\_\_/\_\_\_\_

Signature of Student: \_\_\_\_\_ Date: \_\_\_\_/\_\_\_\_/\_\_\_\_

***Thank you for choosing Nayland College***

***For completion by designated Nayland College staff member***

\_\_\_\_\_ Staff code

I have held an interview with this student on \_\_\_\_/\_\_\_\_/\_\_\_\_ and copies of supporting documentation are attached to this form.

Student enrolled as (tick one):  Regular Student  Fee Paying Student  Exchange student: Scheme \_\_\_\_\_



## YEAR 8 STUDENTS PRELIMINARY EXTENSION SELECTIONS FOR YEAR 9 2012

STUDENT'S NAME: .....

### Compulsory Core Subjects

In 2012 all Year 9 students will take the following subjects as part of their compulsory core programme:

- |                  |                 |
|------------------|-----------------|
| ▪ English        | ▪ Health and PE |
| ▪ Mathematics    | ▪ Art and Music |
| ▪ Social Studies | ▪ Technology    |
| ▪ Science        |                 |

*Please refer to the Curriculum Planner to see where subjects lead to in the senior school.*

In addition to the Compulsory Core Subjects, students have the opportunity to study two Extensions as described in the Subjects and Extension Selections booklet. All Year 9 students will do **two** of these Extensions - one each half of the year.

Please complete this section to indicate the Extensions your son/daughter wishes to study. **Choose 4 subjects and rank them in order of preference** (in case the first two choices are not available). For your own reference please make a note of your selections.

**PLEASE NOTE:**

- ⇒ If you select the restricted Sports Education Extension, the separate application form contained in the Sports Education Booklet must be completed and returned with this form.
- ⇒ Extension choices will be discussed during our October enrolment interviews with new students and their families.

Extension Selections	Ranking		Ranking
▪ Art & Design		▪ Chinese	
▪ Creative Food		▪ Drama	
▪ Economics		▪ Fashion and Design	
▪ French		▪ Graphics	
▪ Digital Technology		▪ Japanese	
▪ Outdoor Education		▪ Sports Education	
▪ Te Reo Maori		▪ Workshop & Design	

**ADDITIONAL INFORMATION:** (eg information about personal strengths and achievements, and any special requests you may have.

Signed: .....  
(Parent/Caregiver)

Date: .....

***Please return this form with your Application for Enrolment***

# NAYLAND COLLEGE SPORTS EDUCATION

## IN PURSUIT OF EXCELLENCE

### IS THIS COURSE FOR YOU?

- ? Do you have the desire and ability to improve your sporting performance?
- ? Would you like access to advice on training and preparation with full scientific assessment and support from qualified staff and well-equipped testing facilities?

### COURSE INFORMATION

This is a restricted entry course aimed at boys and girls who have:

- *the motivation to reach their maximum potential*
- *the ability to set and strive for goals*
- *the interest and desire to improve performance*
- *a positive attitude to achieve in sport*

### PLEASE NOTE:

- You do not need to have achieved high honours in your sport at this stage to benefit from this course; it is more about being given the opportunity to reach your potential.
- This course is ideal for those students who are serious about their sport. It can be continued throughout their subsequent years at Nayland College and potentially offers them the option to specialise in a Sports Academy in the senior school.
- The opportunity currently exists for continued study at tertiary level through either the Sports Institute of Otago (based at Taieri High School) or the Waikato Polytechnic (Certificate in Sports Studies), amongst others.



### HOW DO YOU ENROL IN THIS COURSE?

1. Simply by completing the application form overleaf and returning it with your Application for Enrolment.
2. Indicate on your subject selection form that you intend applying for Sports Education as one of your option choices.

### COURSE CONTENT



#### Year 9

- Skill Development
- Sportspersonship
- The role of Captaincy/Leadership
- Rules/Officiating
- Teamwork
- Goal Setting
- Principles of Training
- Methods of Training
- Sports Injury, Prevention and Treatment

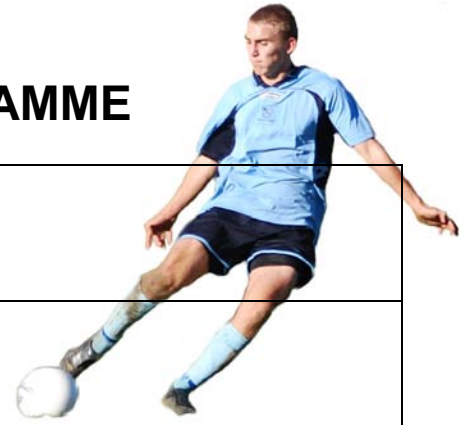
#### Year 10

- Skill Development
- Role of Captaincy/Leadership
- Rules/Officiating
- Sportspersonship
- Teamwork
- Motor Learning
- Exercise Physiology
- Sports Psychology

*'You can't put a limit on anything. The more you dream, the farther you get.'*

Michael Phelps, swimmer and six-time Olympic gold medallist

# APPLICATION FORM SPORTS EDUCATION PROGRAMME



Surname:	First names:
Present school:	

## SPORTS INFORMATION

Major sport:	Other sporting interests:
List your major aims or goals in your sport:	List your sporting achievement or awards over the past three years:
Intermediate school contact regarding your sporting potential (teacher, sports coach):  Name:  Phone no:	



‘One of the things that my parents taught me is never listen to other people’s expectations. You should live your own life and live up to your own expectations, and those are the only things I really care about.’

Eldrick (Tiger) Woods, professional golfer, winner of 87 tournaments and the first ever to hold all four professional major championships at the same time.